

AMG150 8 CHANNEL INDUSTRIAL GIGABIT 30/60/90W POE INJECTORS



Industrial Ethernet Solutions

AMG's industrial PoE injectors provide 30W or 60/90W of power injection on eight Gigabit Ethernet ports. Provided with dual power supply inputs and dual fault relays as standard ensures maximum system reliability.



[AMG150 8 Port Series]

OVERVIEW

Designed in compact DIN rail or wall mount housings, the AMG150 series industrial Power over Ethernet (PoE) injectors are ideally suited for providing power to remote edge network devices.

Available with multiple ports in both IEEE802.3at 30W or IEEE802.3bt 60/90W they are suitable for powering the latest high powered PoE devices over a wide industrial operating temperature range.

Eight full speed 10/100/1000BASE-T(x) ports provide Ethernet In along with Ethernet Out plus 30, 60 or 90W IEEE active PoE (Passive PoE not supported).

Fitted with dual redundant power inputs and both power and PoE failure alarm relays ensures maximum operating reliability and the highest levels of performance with notification on failure.

A wide range of models are available to suit all design requirements.

PSUs need to be ordered separately.

FEATURES

- Innovative thermally efficient housing ensures high levels of device reliability under full load
- -40°C to +75°C temperature maintains performance in extreme conditions
- Plug & Play – no need for any user configuration
- DIN rail or wall mountable – quick to install and remove for maintenance
- Power supply & PoE fault relay outputs
- RJ45 ports support all 10/100/1000Mb speeds
- Dual redundant power inputs
- Supports 15W, 30W, 60W and 90W PoE
- Transparent to all traffic types including Jumbo Frames, VLAN's and Multicast etc
- Designed in the USA & UK. Manufactured in the United Kingdom
- AMG Lifetime Support Warranty

Specifications.

Standards.

IEEE802.3i	10Base-T
IEEE802.3u	100Base-TX
IEEE802.3ab	1000Base-T
IEEE802.3af	15W PoE
IEEE802.3at	30W PoE+
IEEE802.3bt	60 & 90W PoE

Jumbo Frames	Transparent to Jumbo Frames
VLAN Support	Transparent to VLAN traffic
Multicast Support	Transparent to Multicast traffic

Interface.

LED Indicators	2x Power PoE
RJ45 Ports	8x 10/100/1000T(X) RJ45 In/Out with 1.5kV Isolation Protection
Power/Relay	1x 8-Way Screw Terminal

Power.

Power Inputs	2
Operating Voltage	50-56V _{DC} (30W PoE Models) 52-56V _{DC} (90W PoE Models)
Power Consumption	2W Max (without PoE Load)
Total PoE Budget	480W Max (model dependent)
PSE Modes	Mode B (30W Ports) Mode A, Mode B (60/90W Ports)
Protection	Reverse Polarity, Overload Current
PSU Fault Relay	Form A 60V @ 2A Max
PoE Fault Relay	Form A 60V @ 2A Max

Surge Protection.

IEC 61000-4-2 (ESD)	±12kV Contact Discharge ±15kV Air Gap Discharge
ISO 10605 (ESD)	±10kV Contact Discharge ±10kV Air Gap Discharge
IEC 61000-4-4 (EFT)	80A (5/50ns)
IEC 61000-4-5 (Surge)	2A (8/20µs)

Packaging.

Shipping Weight	1.35kg / 2.98lb
Dimensions	(W x D x H) 260 × 200 × 60 mm 10.24 × 7.87 × 2.36 in

Mechanical.

Housing	Anodised Aluminium
Dimensions:	(W x D x H) 59 × 125 × 156 mm 2.32 × 4.92 × 6.14 in
(Excluding Wall Brackets)	
IP Rating	IP40
Installation	Wall Mount or DIN-Rail
Weight	1.20kg / 2.65lb

Environmental.

Operating Temp.	-40 to +75°C / -40 to +167°F
Storage Temp.	-40 to +85°C / -40 to +185°F
Humidity	5% to 95% (non-condensing)
MTBF	>250,000 hours
MTBF Standard	Telcordia SR-332 GF 30°C
Heat Dissipation	826 BTU/h (8x 30W PoE) 1645 BTU/h (4x 90W + 4x 30W PoE)
Cooling	Passive Cooling
Noise Level	0 dBA

Regulatory.

Safety	IEC/EN 62368-1
EMI	EN 55032 Class A CISPR 32 FCC Part 15B Class A
EMS	EN 61000-4-2 (ESD) EN 61000-4-3 (RS) EN 61000-4-4 (EFT) EN 61000-4-5 (Surge) EN 61000-4-6 (CS) EN 61000-4-8 (PFMF)
Shock	IEC 60068-2-27
Free Fall	IEC 60068-2-32
Vibration	IEC 60068-2-6
Environmental	Reach RoHS WEEE
Supply Chain	NDAA & TAA Compliant

Designed to meet NEMA TS2 & EN 50121-4

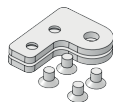
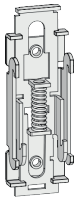
Part Numbers.

8 Channel Industrial PoE Injectors

AMG150-8GAT-P240	8 × 10/100/1000BaseT(x) RJ45 In Ports, 8 × 10/100/1000BaseT(x) RJ45 with 30W PoE+ Out Ports, 240W Max PoE Budget
AMG150-4GBT-4GAT-P480	8 × 10/100/1000BaseT(x) RJ45 In Ports, 4 × 10/100/1000BaseT(x) RJ45 with 90W PoE++ & 4 × 10/100/1000BaseT(x) RJ45 with 30W PoE+ Out Ports, 480W Max PoE Budget

Included Accessories.

DIN Rail Adapter Rear Mounted Metal DIN Rail Clip & Screws For DIN Rail Mounting AMG150 Series Products
Wall Mounting Brackets 2x Wall Mounting Brackets & Screws For Wall / Surface Mounting AMG150 Series Products



Recommended PSUs.

AMGPSU-I48-P240 DIN-Rail Mounting Industrial Grade PSU, -40 to +70°C, 48-53VDC, 240W*
AMGPSU-I48-P480 DIN-Rail Mounting Industrial Grade PSU, -40 to +70°C, 48-55VDC, 480W*

*Also available with no exposed mains terminals and direct IEC input. Order with -IEC at the end of the part code (e.g. AMGPSU-I48-P120-IEC)

Optional Accessories.

AMG2035 Side Mounted Wall Bracket Adapter Kit For DIN Rail Mounting AMG150 Series Products In Depth Restricted Installations. Adapter Kit Can Be Extended Using The Included Extension Kit To Also Mount A DIN Rail Power Supply Up To 480W

In a continuing effort to improve and advance technology, product specifications are subject to change without notice. Please visit www.amgsystems.com for the latest product specifications.

AMG Systems Ltd. 4 Pioneer Way, Castleford, WF10 5QU, UK T: +44 (0) 1767 600 777 E: sales@amgsystems.com
AMG Systems Inc. 62 Spring Hill Road, Trumbull, CT 06611, USA T: +1-855-AMGPOE1 (855-264-7631) E: usasales@amgsystems.com
D33619-03 amgsystems.com

Proud to be a British
Manufacturer 